

THE SEAMLESS WAREHOUSE

Elevate Your Warehouse Performance with Honeywell and AEB

In today's highly complex working environments, it is critical that businesses have real-time visibility into their assets, people, and processes. Whether your organisation stores and manages retail inventory, operates as a distribution centre, or a manufacturing warehouse; having a productive, accurate and profitable supply chain is key to ongoing business success.

Honeywell has partnered with leading international logistics software specialist, AEB, to develop a solution that will elevate the performance of your warehouse. The partnership ties together processes, data collection and activities in real-time to deliver a cost-effective, holistic warehouse management solution.

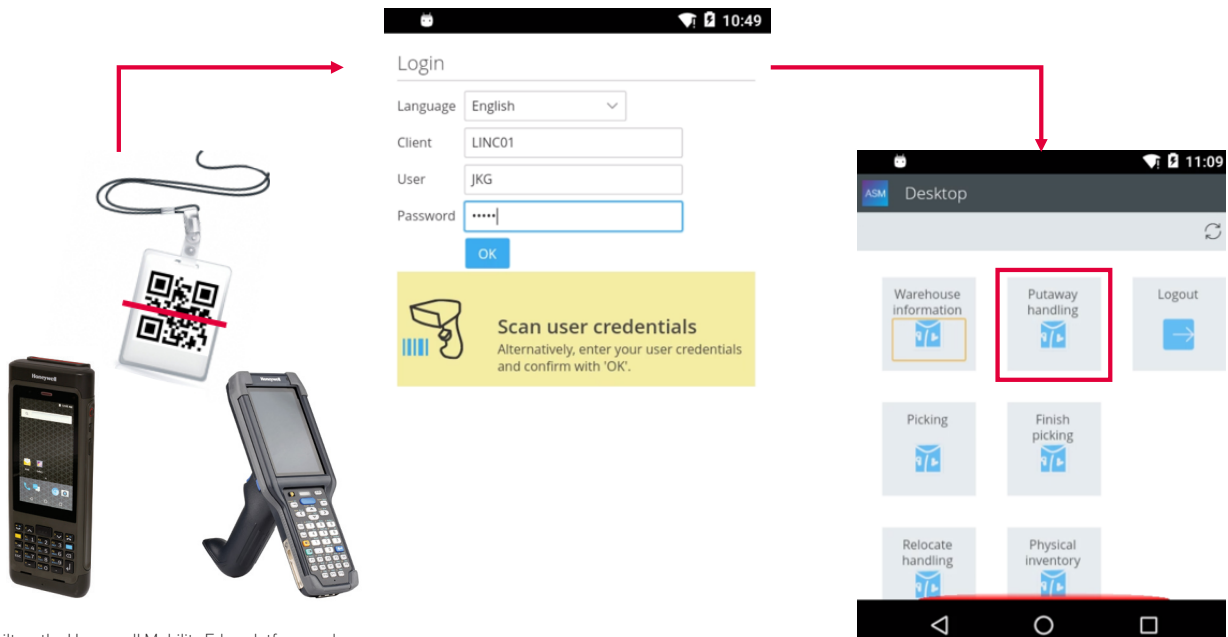
Honeywell's wide range of mobility, scanning and printing solutions integrate seamlessly with AEB's Warehouse Management System (WMS) – complementing its backend capabilities with advanced front-end mobile solutions, to improve warehouse performance.

Honeywell and AEB Warehouse Use Cases

- Receiving, Picking, Packing & Shipping
- Inventory Management
- Supply Chain Intelligence
- Billing

Through coupling AEB's leading WMS with Honeywell's advanced ultra-rugged handheld mobile computers, businesses can enhance important warehouse processes. From the physical put-away of goods to identifying actual storage location of items; to outbound picking processes, either as single order picking or multi-order picking, physical inventory and handling unit relocation – Honeywell with AEB can drive workflow performance for your warehouse.

Using AEB launchpad, Honeywell mobile computers seamlessly integrate into AEB's WMS, which offers an intuitive user interface and superior customer experience. Honeywell's mobile computer supports Android operating system, offering an extended product lifecycle all the way through Android™ R to maximise return on customer investment and provide a lower overall Total Cost of Ownership (TCO).



Built on the Honeywell Mobility Edge platform and Android, the rugged Dolphin CN80 and CK65 mobile computers combine touchscreen and keypad data input, real-time connectivity, and advanced data capture for industry-leading investment protection.

Unleash the power of your warehouse with Honeywell and AEB:

- **Optimise time and processes in goods receipt and stock put-away:** Runs material and quantity checks, and drives efficiencies in stock put-away. This saves time by using route-optimised stock put-away, enhances workflows through configurable stock put-away strategies, and implements efficient cross-docking and returns processes. Honeywell helps make receiving both rapid and extremely accurate with scanning that ensures accurate first-time barcode reads, even for codes that are damaged or difficult to read.
- **Faster, more precise picking:** Our integrated order-picking technologies deliver maximum throughput and accuracy in high-velocity, high-SKU environments.
- **Stock visibility across all locations:** AEB WMS provides stock and its location at a glance: product, batch, and serial numbers, shelf lives, and blocks and reservations, in all types of warehouses.

Warehouse operations are complex. To achieve business success, you need to be working with the best. With Honeywell and AEB, businesses will benefit from a connected workforce that's faster, more accurate, and more flexible to meet today's changing business demands.



Honeywell end-to-end solutions for DCs

Honeywell is uniquely equipped to help you achieve logistical and operational excellence through smart end-to-end solutions. From identifying pain points to transforming distribution centers, our cutting-edge solutions—when combined—maximize operational potential and optimize outcomes. The range of solutions that we will explore across DC operations includes:

Mobile computing

Our rugged handheld and vehicle-mounted computers deliver multipurpose utility, improve worker productivity, and help get the job done safely and efficiently. They are also Android™ capable and developed on a common platform called Mobility Edge™ that provides easier and faster deployment and extends the life of the investment with future proofing of security and system development.



Scanning

Built for specific challenges and work environments, we offer a robust variety of industrial and handheld scanning solutions to meet your various needs. Most of these solutions also are capable of reading both near and far labels.



Printing

Our wired and wireless printer solutions are designed with built-in intelligence that improves efficiency and lowers costs, while satisfying high-demand printing needs.

High-mobility Wearable Solution

Our Bluetooth Ring Scanner reliably transmits critical data from up to 30 feet away, giving your operators unsurpassed freedom of movement to perform barcode reading quickly, safely and comfortably.

Software

We help companies make the digital transformation necessary to increase reliability, improve utilization and enhance productivity.

Services

Life cycle support services from Honeywell provides the services, parts and support needed to keep systems running at peak efficiency.



Are you ready to see how your DC stacks up?

At Honeywell, we have extensive experience in successfully solving complex problems for a variety of e-commerce and omnichannel businesses. We're committed to solving your DC challenges through relentless innovation and a desire to deliver best-fit solutions. We provide access to the actionable insights and information you need to transform your business.

Our expert assessment teams will partner with you to understand your unique business requirements and identify where opportunities exist to optimize your workflows and increase efficiencies within today's competitive retail climate. Take your DC to the next level. Contact us today:

Honeywell Safety & Productivity Solutions

Phone: +632 730 7300
Michelle.Anda@honeywell.com
www.honeywellaidc.com

AEB (Asia Pacific) Pte Ltd

Phone: +65 6337 9300
info.sg@aeb.com
www.aeb.com/sg

Honeywell | **AEB**